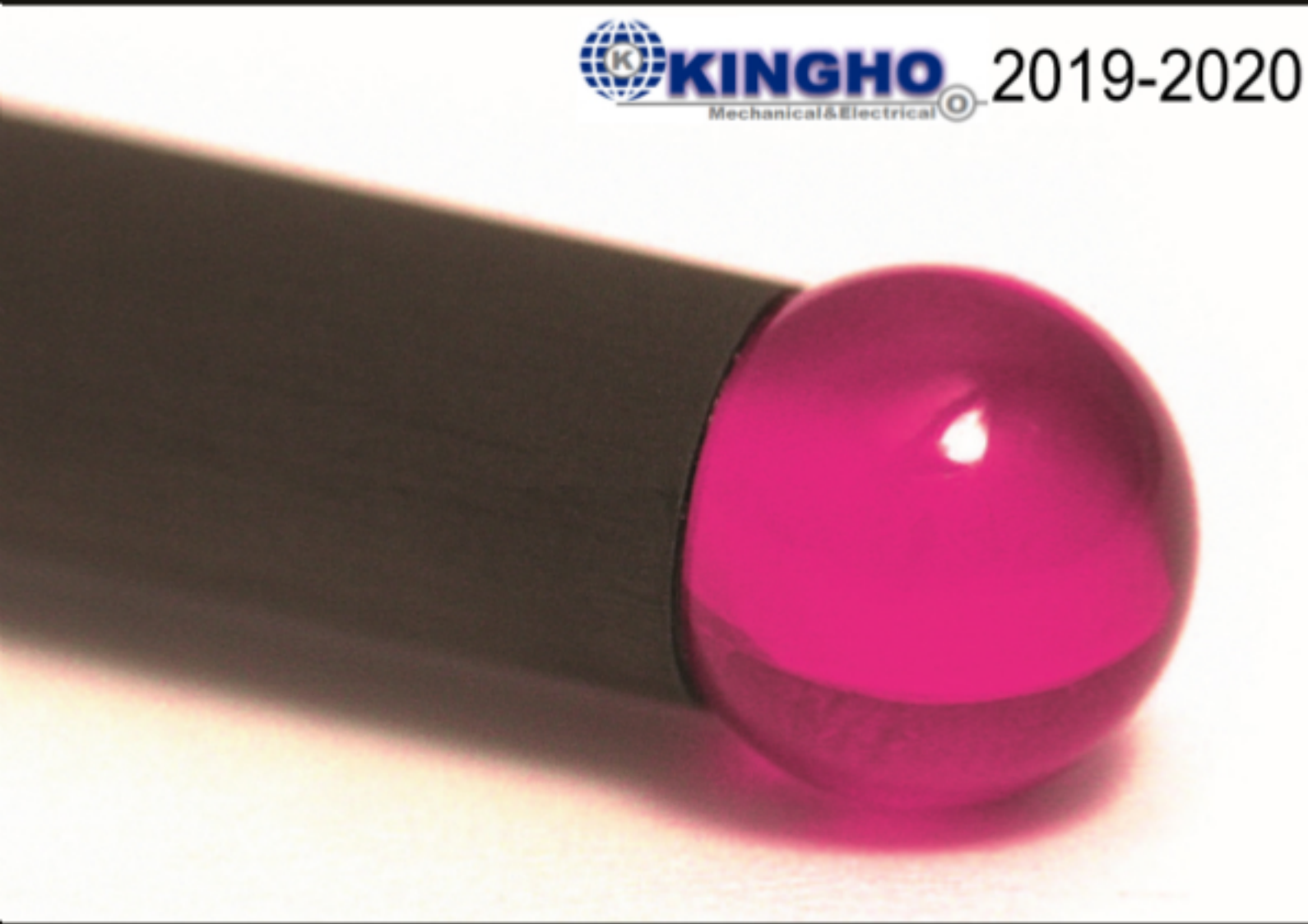


中国区官方授权总代理

 **KINGHO** 2019-2020
Mechanical & Electrical 



2017 2018 **2019** 2020 2021

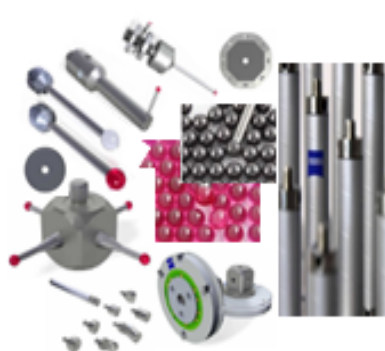
3D 测量技术-坐标测量探针系统解决方案

探针品牌家族:

M3 探针系列



M5 探针系列

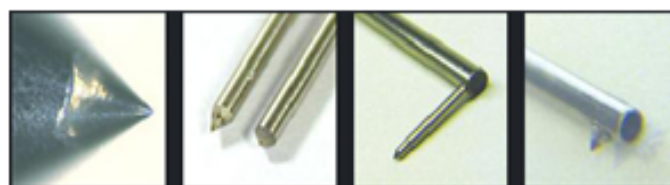


M2/M2.5/M4 探针系列



轮廓仪探针系列

粗糙度仪探针系列



检测&制造设备校准探针系列



工业CT校准探针系列



品牌直销



根据客户需求定制
多样化探针方案呈现您的精确数值

在这里可以找到适合您测量工作的
测针,也可随心所欲定制化您的探针方案

Index:

Index About us	1-2
3D Metrology	3-48
Form Contur	49-50
Surface Roughness	51-52
Metrology Manufacturing machines	53-53
ICT Industrial computer tomography	54-54
Special styli myprobe.de	55-56



Precision is our passion.
Kingho Mech&Elec Tech(Shanghai) Co.,LTD



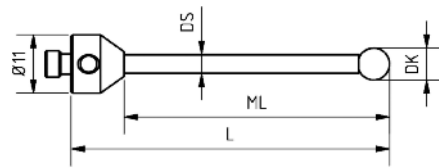
3D | Metrology

Our standard equipment for the 3D measurement technology includes more than 600 stocked items of various types. Thus we are able to compile an individual basic equipment for you within 1-2 days. Our internal processes allow to manufacture special styli in different sizes, designs and geometries.

Of course precise repair services are part of our service.



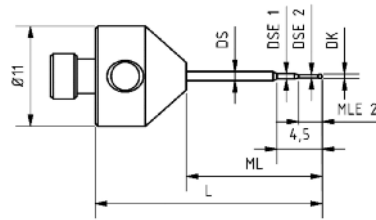
Shaft: Carbide
Sphere: Ruby



Part-No.	DK	L	ML	DS	weight in g
ATG-1520	1,5	20	10	1	5,7
ATG-1525	1,5	25	15	1	5,7
ATG-1533	1,5	33	23	1	5,5
ATG-2020	2	20	10	1	5,7
ATG-2025	2	25	15	1	5,7
ATG-2030	2	30	20	1,5	5,8
ATG-2033	2	33,5	23,5	1,5	5,8
ATG-2040	2	40	30	1,5	5,9
ATG-2520	2,5	20	10	1,5	5,8
ATG-2525	2,5	25	15	1,5	5,9
ATG-2530	2,5	30	20	1,5	6,1
ATG-2534	2,5	34	24	1,5	6,1
ATG-3020	3	20	10	1,5	5,8
ATG-3025	3	25	15	1,5	6,1
ATG-3030	3	30	20	1,5	6,2
ATG-3033	3	33,5	23,5	2	6,7
ATG-3036	3	36,5	26,5	2	6,9
ATG-3050	3	50	40	2	7,5
ATG-3058	3	58	48	2	7,9
ATG-3575	3,5	75	65	2,5	10,6
ATG-4030	4	30	20	2	6,6
ATG-4033	4	33,5	23,5	2	6,8
ATG-4050	4	50	40	2,5	8,8
ATG-4064	4	64	54	2	8,2
ATG-4075	4	75	65	2,5	10,7
ATG-5030	5	30	20	2	6,7
ATG-5050	5	50	40	2,5	9
ATG-5050-DS3.5	5	50	40	3,5	11
ATG-5053	5	53	43	3,5	12,2
ATG-5075	5	75	65	3,5	15,2
ATG-50100	5	100	90	3,5	18,7
ATG-6054	6	54	44	3,5	12,2
ATG-7055	7	55	45	3,5	12,7
ATG-8050	8	50	40	3	11
ATG-8063	8	63,5	50,5	6	23
ATG-8063-REF	8	63,5	50,5	6	23
ATG-8075-DS6	8	75	62	6	30
ATG-80100-DS6	8	100	87	6	41
ATG-80114-DS6	8	114,5	101,5	6	46
ATG-10065-DS6	10	65,5	52,5	6	27
ATG-100118-DS6	10	118	105	6	47

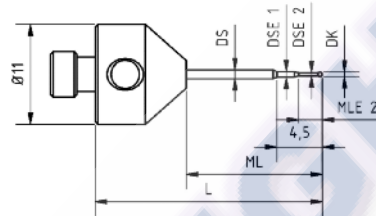
• Special Styli possible, see www.Kingho-china.com

Schaft: Carbide
Kugel: Carbide



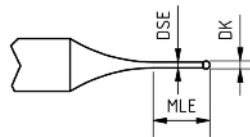
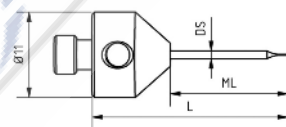
Part-No.	DK	L	ML	DS	DSE 1	MLE 2	DSE 2	weight in g
ATG-0225	0,2	25	15	1	0,5	1	0,17	5,6
ATG-0325	0,3	25	15	1	0,5	1,3	0,23	5,6
ATG-0525	0,5	25	15	1	0,6	2,6	0,32	5,6

Shaft: Carbide
Sphere: Ruby



Part-No.	DK	L	ML	DS	DSE 1	MLE 2	DSE 2	weight in g
ATG-0525-R	0,5	25	15	1	0,6	2,6	0,32	5,6

Shaft: Carbide
Sphere: Carbide

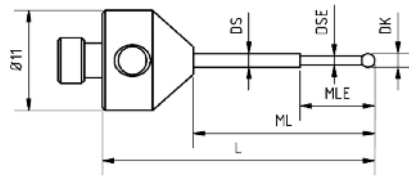


Part-No.	DK	L	MLE	DSE	weight in g
ATG-00825	0,08	25	1	0,06	5,6
ATG-01025	0,10	25	1	0,07	5,6
ATG-01225	0,12	25	1	0,09	5,6
ATG-01525	0,15	25	1	0,11	5,6

• Special Styli possible, see www.Kingho-china.com

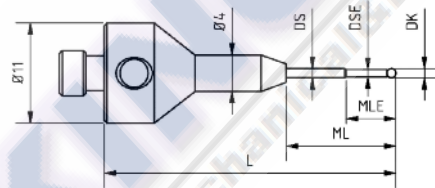


Shaft: Carbide
Sphere: Ruby



Part-No.	DK	L	ML	DS	DSE	MLE	weight in g
ATG-0625	0,6	25	15	1	0,4	4	5,6
ATG-0825	0,8	25	15	1	0,5	4,6	5,6
ATG-1020	1	20	10	1	0,7	5	5,6
ATG-1025	1	25	15	1	0,7	5	5,7
ATG-1030	1	30	20	1,5	0,7	5	6,1
ATG-1530	1,5	30	20	1,5	1	8	6,1

Shaft: Carbide
Sphere: Ruby (HM)

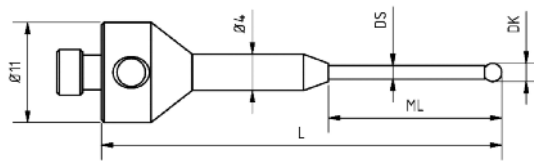


Part-No.	DK	L	ML	DS	DSE	MLE	weight in g
ASZ-0332	0,3 HM	32	12	1	0,23	1,3	6,5
ASZ-0532	0,5 HM	32	12	1	0,32	2,6	6,5
ASZ-0632	0,6	32	12	1	0,4	4	6,5
ASZ-0832	0,8	32	12	1	0,6	4,6	6,8
ASZ-1032	1	32	12	1	0,8	5	6,8

• Special Styli possible, see www.Kingho-china.com

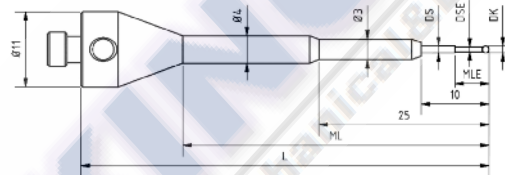


Shaft: Steel/Carbide
Sphere: Ruby



Part-No.	DK	L	ML	DS	weight in g
ASZ-13532	1,35	32	12	1	6,9
ASZ-13544	1,35	44	19	1	7,5
ASZ-1532	1,5	32	12	1	6,5
ASZ-1544	1,5	44	19	1	7,5
ASZ-2032	2	32	12	1,5	7,3
ASZ-2044	2	44	19	1,5	8
ASZ-2058	2	58	33	1,5	8
ASZ-2532	2,5	32	12	1,5	7,3
ASZ-2544	2,5	44	19	1,5	8
ASZ-2558	2,5	58	33	1,5	8

Shaft: Steel/Carbide
Sphere: Ruby (HM)

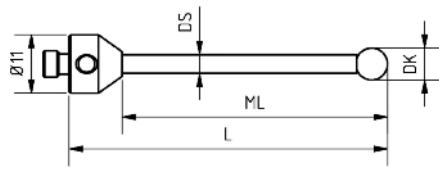


Part-No.	DK	L	ML	DS	DSE	MLE	weight in g
ASG-0360	0,3 HM	60	45	1	0,2	1,3	10,1
ASG-0560	0,5 HM	60	45	1	0,3	2,6	10,1
ASG-0860	0,8	60	45	1	0,5	4,6	10,1
ASG-1060	1	60	45	1	0,7	5	10,2
ASG-1560	1,5	60	45	1			10,3
ASG-2060	2	60	45	1			10,4

• Special Styli possible, see www.Kingho-china.com



Shaft: Carbon
Sphere: Ruby



Part-No.	DK	L	ML	DS	weight in g
ATG-3025-OC	3	25	15	2	4
ATG-3033-OC	3	33	23	2	4
ATG-3050-OC	3	50	40	2	4
ATG-3058-OC	3	58	48	2	4
ATG-4033-OC	4	33	23	2	4
ATG-4058-OC	4	58	48	2	4
ATG-4064-OC	4	64	54	2	4
ATG-5050-OC	5	50	40	3,5	4
ATG-5075-OC	5	75	65	3,5	5
ATG-50100-OC	5	100	90	3,5	5
ATG-6054-OC	6	54	44	3,5	5
ATG-7055-OC	7	55	45	3,5	5
ATG-8050-OC	8	50	37	6	11
ATG-8063-OC	8	63	50	6	12
ATG-8075-OC	8	75	62	6	12
ATG-80100-OC	8	100	87	6	12,5
ATG-80114-OC	8	114	101	6	12,5
ATG-80150-OC	8	150	137	6	13
ATG-80200-OC	8	200	187	6	14
ATG-10065-OC	10	65	52	6	8
ATG-100118-OC	10	118	105	6	15
ATG-100150-OC	10	150	137	6	16
ATG-100200-OC	10	200	187	6	17

• Special Styli possible, see www.Kingho-china.com

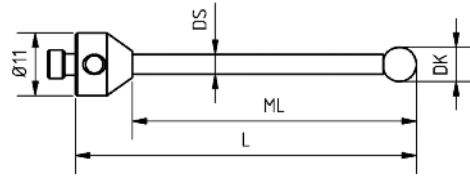
Shaft: Carbon
Sphere: Silicon Nitride



Part-No.	DK	L	ML	DS	weight in g
ATG-SN3033-OC	3	33	23	2	5,5
ATG-SN3058-OC	3	58	48	2	5,5
ATG-SN5050-OC	5	50	40	3,5	6,5
ATG-SN5075-OC	5	75	65	3,5	7
ATG-SN50100-OC	5	100	90	3,5	7
ATG-SN8063-OC	8	63	50	6	9
ATG-SN80100-OC	8	100	87	6	10
ATG-SN80114-OC	8	114	101	6	12
ATG-SN80150-OC	8	150	137	6	14
ATG-SN80200-OC	8	200	187	6	15,5
ATG-SN100118-OC	10	118	105	6	12,5
ATG-SN100150-OC	10	150	137	6	13,5
ATG-SN100200-OC	10	200	187	6	16

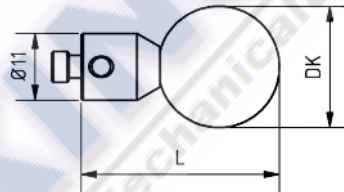
• Special Styli possible, see www.Kingho-china.com

Shaft: Ceramic
Sphere: Ruby



Part-No.	DK	L	ML	DS	weight in g
ATG-5053-KE	5	53	43	3,5	7,5
ATG-5075-KE	5	75	65	3,5	8,3
ATG-50100-KE	5	100	90	3,5	9,4
ATG-6054-KE	6	54	44	3,5	7,8
ATG-8063-KE	8	63,5	50,5	6	12
ATG-80100-KE	8	100	87	6	12
ATG-80114-KE	8	114,5	101,5	6	14,5
ATG-10065-KE	10	65,5	52,5	6	9,7

Shaft: Styli without Shaft
Sphere: Ceramic

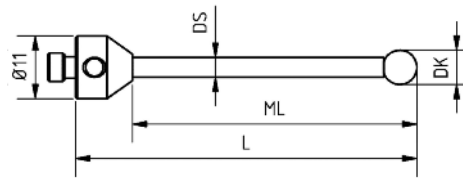


Part-No.	DK	L	weight in g
ATG-KEDK15-L28	15	28	19
ATG-KEDK16-L28	16	28	20
ATG-KEDK18-L28	18	28	22
ATG-KEDK20-L33	20	33	28
ATG-KEDK30-L43	30	43	66

• Special Styli possible, see www.Kingho-china.com



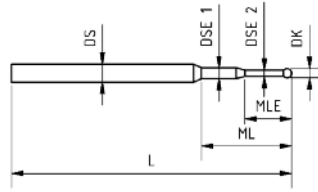
Shaft: Carbide
Sphere: Silicon Nitride



Part-No.	DK	L	ML	DS	weight in g
ATG-SN1533	1,5	33	23	1	5,8
ATG-SN2030	2	30	20	1,5	6,2
ATG-SN2033	2	33,5	23,5	1,5	6,3
ATG-SN3020	3	20	10	1,5	5,8
ATG-SN3025	3	25	15	2	6,1
ATG-SN3030	3	30	20	2	6,2
ATG-SN3033	3	33,5	23,5	2	6,7
ATG-SN3050	3	50	40	2	7,5
ATG-SN3058	3	58	48	2	7,9
ATG-SN3575	3,5	75	65	2,5	10,6
ATG-SN4030	4	30	20	2	6,6
ATG-SN4033	4	33,5	23,5	2	6,8
ATG-SN4050	4	50	40	2	8,8
ATG-SN4064	4	64	54	2,5	8,2
ATG-SN4075	4	75	65	2,5	10,7
ATG-SN5050	5	50	40	3,5	12
ATG-SN5053	5	53	43	3,5	12,2
ATG-SN5075	5	75	65	3,5	15,2
ATG-SN50100	5	100	90	3,5	18,7
ATG-SN6050	6	50	40	3,5	13
ATG-SN6054	6	54	44	3,5	12,2
ATG-SN8063	8	63,5	50,5	6	29
ATG-SN8075	8	75	62	6	35
ATG-SN80100	8	100	87	6	45
ATG-SN80114	8	114,5	101,5	6	50,6
ATG-SN100118	10	118	105	6	52,8
ATG-SN100165	10	165	152	6	72

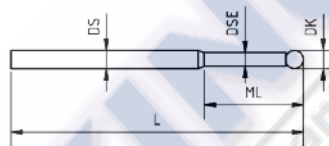
• Special Styli possible, see www.Kingho-china.com

Shaft: Carbide
Sphere: Carbide



Part-No.	DK	L	ML	DS	DSE 1	MLE	DSE 2	weight in g
TST-0215	0,2	15,2	4,5	1	0,5	1	0,17	0,1
TST-0315	0,3	15,3	4,5	1	0,5	1,3	0,23	0,1
TST-0515	0,5	15,5	5	1	0,6	2,6	0,32	0,1
TST-0515-R	0,5 ruby	15,5	5	1	0,6	2,6	0,32	0,1

Shaft: Carbide
Sphere: Ruby



Part-No.	DK	L	ML	DS	DSE	weight in g
TST-0615	0,6	15,6	4	1	0,4	0,1
TST-0816	0,8	15,8	5	1	0,5	0,1
TST-1015	1	16	5	1	0,7	0,1

• Special Styli possible, see www.Kingho-china.com

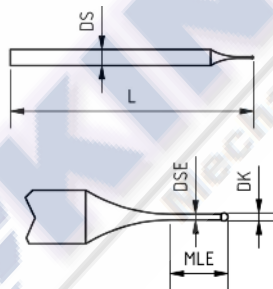


Shaft: Carbide
Sphere: Ruby



Part-No.	DK	L	DS	weight in g
TST-13525	1,35	26,35	1	0,3
TST-1525	1,5	26,5	1	0,3
TST-2025	2	27	1,5	0,7
TST-2525	2,5	27,5	1,5	0,7

Shaft: Carbide
Sphere: Carbide

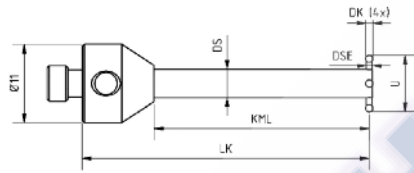


Part-No.	DK	LK	MLE	DSE	weight in g
TST-00815	0,08	15	1	0,06	0,1
TST-01015	0,10	15	1	0,07	0,1
TST-01215	0,12	15	1	0,09	0,1
TST-01515	0,15	15	1	0,11	0,1

• Special Styli possible, see www.Kingho-china.com



Shaft: Steel/Carbide
Sphere: Ruby

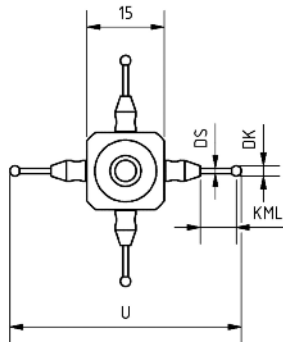


Part-No.	DK	LK	KML	DS	DSE	U	weight in g
ATG-STAR-DK0.6(4x)-U8	0,6	40	30	4	0,4	8	9
ATG-STAR-DK0.8(4x)-U8	0,8	40	30	4	0,6	8	9
ATG-STAR-DK1.0(4x)-U8	1	40	30	4	0,8	8	9

• Special Styli possible, see www.Kingho-china.com

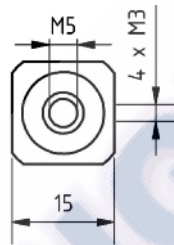


Shaft: Carbide
Sphere: Ruby



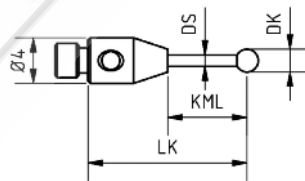
Part-No.	DK	U	KML	DS	weight in g
ATG-STAR-DK1.0(4x)-L45	1	45	7,5	0,7	10,3
ATG-STAR-DK1.5(4x)-L45	1,5	45	7,25	1	10,3
ATG-STAR-DK2.0(4x)-L45	2	45	7	1	10,4
ATG-STAR-DK2.5(4x)-L45	2,5	45	6,75	1,2	10,4
ATG-STAR-DK3.5(4x)-L45	3,5	45	6,25	1,5	10,5

Cube
Material: Aluminium hard anodized



Part-No.	weight in g
WM5-15-M3	7,4

Styli M3 for Star Styli

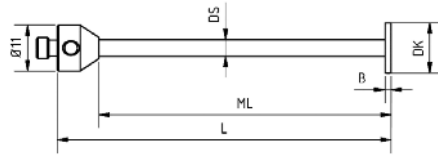


Part-No.	DK	LK	KML	DS	weight in g
TM3-1014(LK14.5)-DS0.7	1	14,5	7,5	0,7	0,7
TM3-1514(LK14.25)-DS1	1,5	14,25	7,25	1	0,8
TM3-2014(LK14)-DS1	2	14	7	1	0,8
TM3-2514(LK13.75)-DS1.2	2,5	13,75	6,75	1,2	0,9
TM3-3513(LK13.25)-DS1.5	3,5	13,25	6,25	1,5	0,9

• Special Styli possible, see www.Kingho-china.com



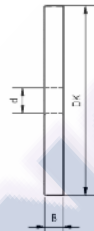
Shaft: Carbide



Part-No.	DK Mat	DK	L	B	ML	DS	weight in g
ATG-DISC-DK10	Carbide	10	80	1	70	3,5	29
ATG-DISC-DK12	Carbide	12	80	1,5	70	4	33
ATG-DISC-DK20	Ceramic	20	100	3	87	6	48
ATG-DISC-DK25	Ceramic	25	100	3	87	6	50
ATG-DISC-DK30	Ceramic	30	100	4	87	6	53

Discs

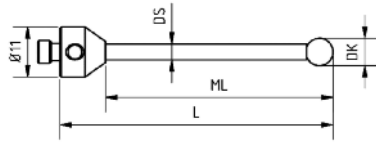
Material: Steel high tensile



Part-No.	DK	B	d	weight in g
DISC-DK10x4-M5	10	4	M5	2
DISC-DK15x4-M5	15	4	M5	5
DISC-DK20x4-M5	20	4	M5	9
DISC-DK30x4-M5	30	4	M5	21
DISC-DK40x5-M5	40	5	M5	42
DISC-DK50x5-M5	50	5	M5	64
DISC-DK60x5-M5	60	5	M5	89
DISC-DK15x4-Bo8	15	4	8	4
DISC-DK20x2-Bo8	20	2	8	4
DISC-DK20x4-Bo8	20	4	8	8
DISC-DK40x4-Bo8	40	4	8	21
DISC-DK50x5-Bo8	50	5	8	36
DISC-DK60x6-Bo8	60	6	8	59

• Special Styli possible, see www.Kingho-china.com

Shaft: Carbide
Sphere: Diamond



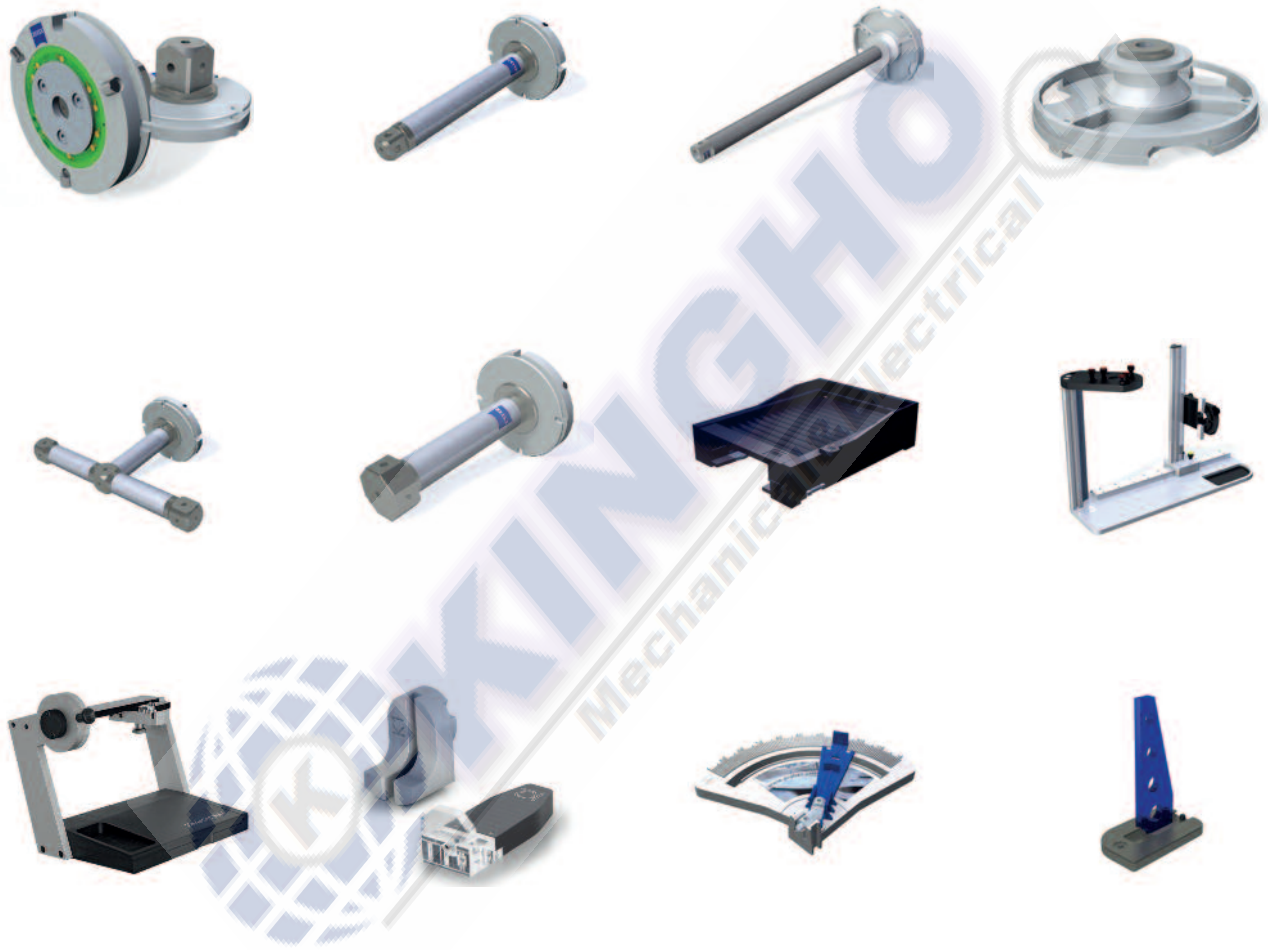
Part-No.	M	DK	L	ML	DS	AD	weight in g
xATG-DCDK2.05-L20-DS1.5	M5	2,05	20	10	1,5	11	6,2
xATG-DCDK2.05-L34-DS1.5	M5	2,05	34	24	1,5	11	6,5
xATG-DCDK3.05-L33-DS2	M5	3,05	33	23	2	11	7,0
xATG-DCDK3.05-L50-DS2	M5	3,05	50	40	2	11	7,7
xATG-DCDK3.05-L58-DS2	M5	3,05	58	48	2	11	8,1
xATG-DCDK3.05-L64-DS2	M5	3,05	64	54	2	11	8,4
xATG-DCDK3.05-L75-DS2	M5	3,05	75	65	2	11	8,9
xATG-DCDK3.05-L100-DS2	M5	3,05	100	90	2	11	10,0
xATG-DCDK5.05-L50-DS3.5	M5	5,05	50	40	3,5	11	9,0
xATG-DCDK5.05-L75-DS3.5	M5	5,05	75	65	3,5	11	13,0
xATG-DCDK5.05-L100-DS3.5	M5	5,05	100	90	3,5	11	20,0
xATG-DCDK8.05-L63.5-DS6	M5	8,05	63,5	50,5	6	11	29,0
xATG-DCDK8.05-L114.5-DS6	M5	8,05	114,5	101,5	6	11	49,0

In addition to the ball materials ruby, ceramic and tungsten carbide you also get diamond-coated spheres. We use diamond-coated spheres of brand Diamond! Scan. The hardness of the spheres is unique worldwide and has very good properties in contact with materials such as aluminum, titanium or copper and also in ceramic materials or glass. The spheres are currently available in diameters of 1.05, 2.05, 3.05, 5.05, and 8.05mm.

Here you find a selection of standard styli, special styli on request.



• Special Styli possible, see www.Kingho-china.com



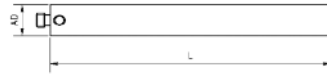
You will find a selection of original Zeiss accessories and equipment in our webshop.

Under the heading "Machine tools" you can find different adapter plates, probe sockets, the FixAssist series and various adjustment tools.

Click on:

www.Kingho-china.com

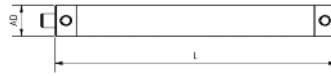
Material: Titanium



Part-No.	AD	L	weight in g
VM5-11.10-TI	11	10	4
VM5-11.15-TI	11	15	6
VM5-11.20-TI	11	20	8
VM5-11.25-TI	11	25	9
VM5-11.30-TI	11	30	10
VM5-11.35-TI	11	35	11
VM5-11.40-TI	11	40	13
VM5-11.50-TI	11	50	13
VM5-11.60-TI	11	60	14
VM5-11.75-TI	11	75	15
VM5-11.80-TI	11	80	16
VM5-11.90-TI	11	90	17
VM5-11.100-TI	11	100	17
VM5-11.120-TI	11	120	20
VM5-11.150-TI	11	150	23
VM5-18.40-TI	18	40	45
VM5-18.50-TI	18	50	33
VM5-18.60-TI	18	60	35
VM5-18.75-TI	18	75	38
VM5-18.80-TI	18	80	39
VM5-18.90-TI	18	90	41
VM5-18.100-TI	18	100	42
VM5-18.120-TI	18	120	46
VM5-18.150-TI	18	150	52
VM5-18.200-TI	18	200	61
VM5-18.250-TI	18	250	70
VM5-18.300-TI	18	300	79

• Special Styli possible, see www.Kingho-china.com

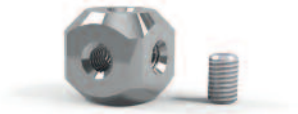
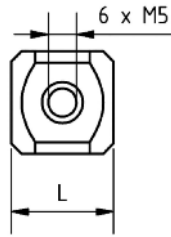
Material: Carbon
Adapters: Titanium



Part-No.	AD	L	weight in g
VM5-11.40-OC	11	40	11
VM5-11.50-OC	11	50	12
VM5-11.60-OC	11	60	12
VM5-11.70-OC	11	70	13
VM5-11.75-OC	11	75	13
VM5-11.80-OC	11	80	14
VM5-11.90-OC	11	90	14
VM5-11.100-OC	11	100	15
VM5-11.120-OC	11	120	16
VM5-11.150-OC	11	150	19
VM5-11.180-OC	11	180	21
VM5-11.200-OC	11	200	22
VM5-11.250-OC	11	250	26
VM5-11.300-OC	11	300	29
VM5-11.400-OC	11	400	36
VM5-20.40-OC	20	40	27
VM5-20.50-OC	20	50	29
VM5-20.60-OC	20	60	30
VM5-20.80-OC	20	80	34
VM5-20.100-OC	20	100	37
VM5-20.120-OC	20	120	40
VM5-20.150-OC	20	150	46
VM5-20.180-OC	20	180	51
VM5-20.200-OC	20	200	54
VM5-20.250-OC	20	250	63
VM5-20.300-OC	20	300	71
VM5-20.400-OC	20	400	88
VM5-20.500-OC	20	500	105
VM5-20.600-OC	20	600	122

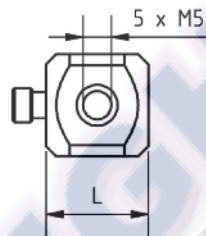
• Special Styli possible, see www.Kingho-china.com

Material: Titanium / Aluminium hard anodized
Enclosed screw



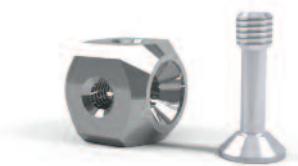
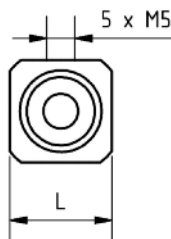
Part-No.	L	Material	weight in g
WM5-15	15	Aluminium	8
WM5-15-TI	15	Titan	13
WM5-20	20	Aluminium	20
WM5-20-TI	20	Titan	32

Material: Titanium
Turning bolt



Part-No.	L	weight in g
WM5-15-TI-IOP	15	13
WM5-20-TI-IOP	20	32

Material: Titanium
Enclosed screw



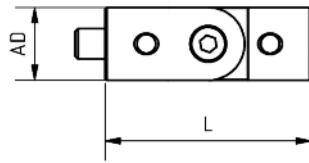
Part-No.	L	weight in g
WM5-15-TI-SENK	15	13

• Special Cubes please inquire



Knuckle Joints

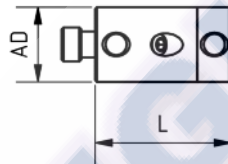
Material: Aluminium hard anodized



Part-No.	AD	L	weight in g
GM5-12.34-L	12	34	11
GM5-18.36-L	18	36	37

Rotary Joints

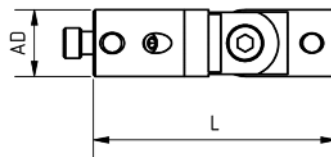
Material: Titanium



Part-No.	L	weight in g
DM5-11.20-TI	20	13
DM5-11.30-TI	30	13
DM5-20.30-TI	30	40

Knuckle Rotary Joints

Material: Titanium



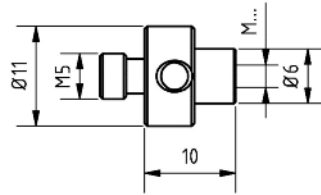
Part-No.	L	weight in g
DSM5-11.40-TI	40	16

• Special Styli possible, see www.Kingho-china.com



Adapters

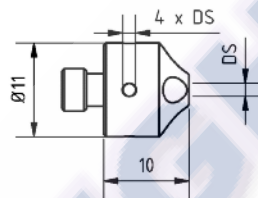
Material: Steel



Part-No.	weight in g
RM5-M2	5
RM5-M3	5

Adapters for TST

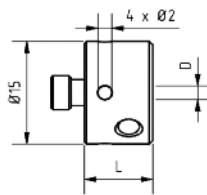
Material: Steel



Part-No.	DS	weight in g
HM5-10.10	1	5,5
HM5-10.15	1,5	5,5

Adapters for TST(Ø2,0)

Material: Steel



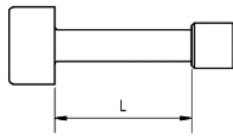
Part-No.	D	L	weight in g
HM5-15.20	2	10	13
HM5-15.20-M5	M5	12,5	15

• Special Styli possible, see www.Kingho-china.com



Rotary Screws

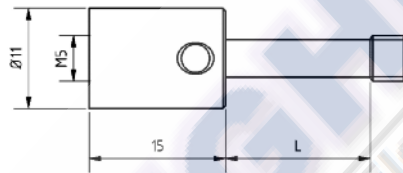
Material: Steel



Part-No.	L		weight in g
SM5-15	15	WM5-15...	3,3
SM5-20	20	WM5-20...	3,5

Rotary Screws

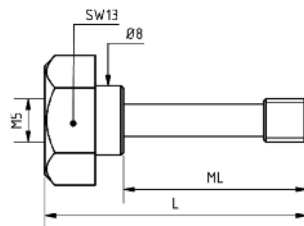
Material: Steel



Part-No.	L		weight in g
SM5-15-M5	15	WM5-15...	11,2
SM5-20-M5	20	WM5-20...	11,4

Screws for Disc

Material: Steel

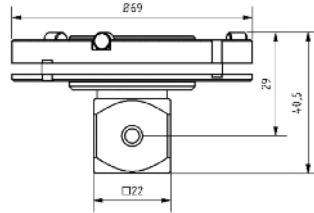


Part-No.	L	ML	weight in g
SCR-M5-10-M5	17,3	10	7
SCR-M5-21-M5	30	21	9
SCR-M5-26-M5	35	26	9

• Special Styli possible, see www.Kingho-china.com



**Adapter Plate
MT/VAST without ID Chip**



Part-No.

**weight
in g**

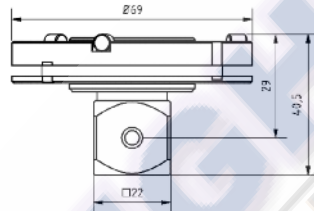
600665-8573-1

1 Stück

ohne ID

158

**Adapter Plates
MT/VAST with ID Chip**



Part-No.

**weight
in g**

600667-9601

1 Stück

mit ID – Original Zeiss

158

WT-MT/VAS-ID-CUBE

1 Stück

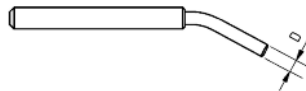
mit ID

158

- Please send us your inquiry for other Adapter plates similar Zeiss / Leitz, www.Kingho-china.com

Tool

Material: Steel, toughness



Part-No.

D

SCL-3

3

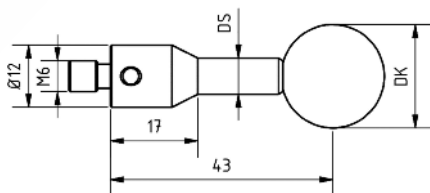
M5 System



Magnetic Base for Calibration Spheres



Part-No.	weight in g
MAG-70-45-64	1600



Calibration Spheres

Part-No.	DK	Material	DS	weight in g
CAL-DK30	30	Grade 05 Keramik / ceramic	7	74
CAL-DK25	25	Grade 05 Keramik / ceramic	7	50
CAL-DK20	20	Grade 05 Keramik / ceramic	7	35
CAL-DK15	15	Grade 05 Keramik / ceramic	7	27
CAL-DK10	10	Grade 05 Rubin / ruby	4	22
CAL-DK5	5	Grade 05 Rubin / ruby	3	19

• Special Styli possible, see www.Kingho-china.com



Certificates

Part-No.

CERT-DK	Test certificate
CERT-DK-DKD	DKD certificate

M6
Extension
Material: Steel

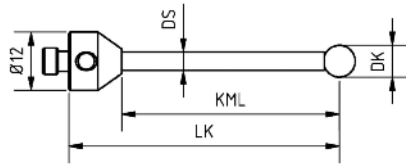


Part-No.	AD	L	weight in g
VM6-14.60-ST	14	60	70

• Special Styli possible, see www.Kingho-china.com

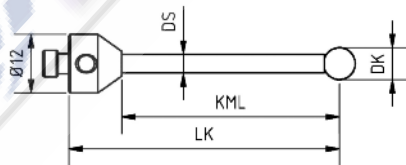


Shaft: Carbide
Sphere: Ruby



Part-No.	DK	LK	KML	DS	weight in g
ATL-1528	1,5	28	18	1	6,1
ATL-1540	1,5	40	30	1	6,7
ATL-2030	2	30	19	1,5	6
ATL-2035	2	35	24	1,5	6,3
ATL-2041	2	41	30	1,5	6,7
ATL-2060	2	60	49	1,5	7
ATL-3035	3	35	24	2	6,7
ATL-3050	3	50	39	2	7,5
ATL-3591	3,5	91	79	3	10,6
ATL-4055	4	55	43	2,5	8,8
ATL-4080	4	80	68	2,5	10,2
ATL-5060	5	60	48	3,5	14,3
ATL-5080	5	80	68	3,5	15,7
ATL-8090	8	90	76	6	29,5
ATL-80125	8	125	111	6	42,3
ATL-80176	8	176	162	6	62,7

Shaft: Ceramic
Sphere: Ruby/Ceramic



Part-No.	DK	LK	KML	DS	DK MAT	weight in g
ATL-8090-KE	8	90	76	6	Rubin / ruby	13,5
ATL-80125-KE	8	125	111	6	Rubin / ruby	14,1
ATL-15090-KE	15	90	76	6	Keramik / ceramic	23,5

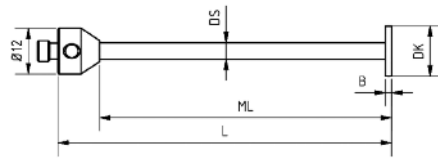
• Special Styli possible, see www.Kingho-china.com



Disc Styli

Shaft: Carbide

Sphere: Carbide

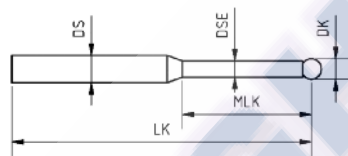


Part-No.	DK	L	ML	DS	B	weight in g
ATL-DISC-DK8	8	56	44	2.5	1	11
ATL-DISC-DK10	10	46	34	3	0.7	10,5
ATL-DISC-DK16	16	58	46	3.5	2.5	26

Styli without Thread

Shaft: Carbide

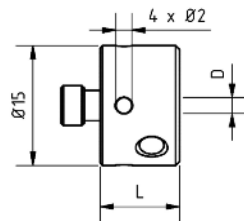
Sphere: Ruby



Part-No.	DK	LK	MLK	DS	DSE	weight in g
TST-0515(LZ)	0,5	15	2	2	0,2	0,2
TST-0815(LZ)	0,8	15	4	2	0,6	0,2
TST-1015(LZ)	1	15	4	2	0,8	0,2
TST-1034(LZ)	1	34	14	2	0,8	0,4
TST-1522(LZ)	1,5	22	9,5	2	1,2	0,3
TST-2022(LZ)	2	22	9,5	2	1,5	0,6
TST-3035(LZ)	3	35	-	2	-	1,7

Adapters for TST (Ø2,0)

Material: Steel

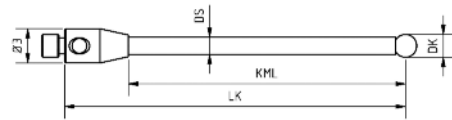


Part-No.	D	L	weight in g
HM5-15.20	2	10	13
HM5-15.20-M5	M5	12,5	15

• Special Styli possible, see www.Kingho-china.com

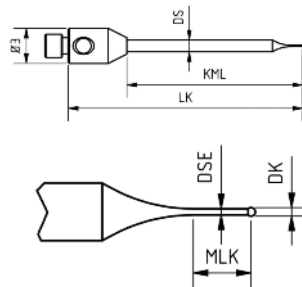


Shaft: Carbide
Sphere: Ruby



Part-No.	DK	LK	KML	DS	weight in g
TM2-1010	1	10	5	0,7	0,2
TM2-1015	1	15	10	0,7	0,3
TM2-1510	1,5	10	5	0,7	0,3
TM2-1520	1,5	20	15	1	0,4
TM2-1530	1,5	30	25	1	0,4
TM2-2010	2	10	5	1	0,3
TM2-2015	2	15	10	1	0,3
TM2-2020	2	20	15	1	0,4
TM2-2030	2	30	24	1,5	0,9
TM2-2040	2	40	34	1,5	1,4
TM2-2520	2,5	20	14	1,5	0,4
TM2-2530	2,5	30	24	1,5	1
TM2-2540	2,5	40	34	1,5	1,7
TM2-3010	3	10	4	1,5	0,6
TM2-3020	3	20	14	1,5	0,7
TM2-3030	3	30	24	1,5	1
TM2-3040	3	40	34	2	1,4
TM2-3050	3	50	44	2	1,8
TM2-4010	4	10	4	2	0,7
TM2-4020	4	20	14	2	0,8
TM2-4030	4	30	24	2	1,6
TM2-4040	4	40	34	2	2,0
TM2-4050	4	50	44	2	2,4
TM2-5010	5	10	4	2	0,8
TM2-5020	5	20	14	2	1,2
TM2-5030	5	30	24	2	1,6
TM2-5040	5	40	34	2	2,0
TM2-5050	5	50	44	2	2,4
TM2-6010	6	10	4	2	1,3
TM2-6020	6	20	14	2	1,4

Microstyli
Shaft: Carbide
Sphere: Carbide

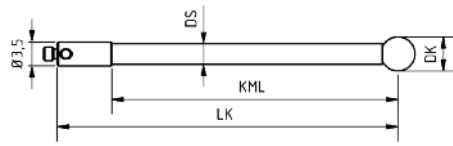


Bestell-Nr.	DK	LK	MLK	DSE	weight in g
TM2-00820	0,08	20	1	0,06	0,4
TM2-01020	0,10	20	1	0,07	0,4
TM2-01220	0,12	20	1	0,09	0,4
TM2-01520	0,15	20	1	0,11	0,4

• Special Styli possible, see www.Kingho-china.com

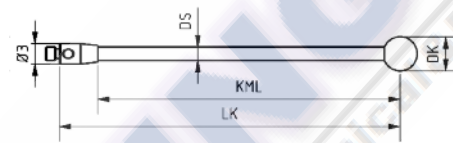


Shaft: Carbon
Sphere: Ruby



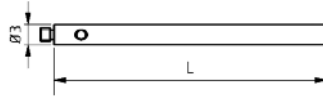
Part-No.	DK	LK	KML	DS	weight in g
TM2-3040-OC	3	40	34	2	0,9
TM2-4050-OC	4	50	42	3	0,9
TM2-5030-OC	5	30	22	3	0,9
TM2-5050-OC	5	50	42	3	0,9
TM2-6030-OC	6	30	22	3	1,0
TM2-6050-OC	6	50	42	3	1,0
TM2-8050-OC	8	50	42	3	1,2

Shaft: Ceramic
Sphere: Ruby



Part-No.	DK	LK	KML	DS	weight in g
TM2-3050-KE	3	50	44	2	0,8
TM2-4050-KE	4	50	44	2	0,9
TM2-5050-KE	5	50	44	2	1,0

• Special Styli possible, see www.Kingho-china.com

Material: Steel

Part-No.	L	weight in g
VM2-3.5	5	0,1
VM2-3.10	10	0,5
VM2-3.15	15	0,7
VM2-3.20	20	1
VM2-3.30	30	1,6
VM2-3.40	40	2,1

Material: Carbon

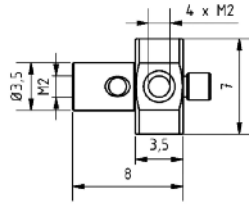
Part-No.	L	weight in g
VM2-3.40-OC	40	0,9
VM2-3.50-OC	50	1
VM2-3.70-OC	70	1,3
VM2-3.90-OC	90	1,5

Material: Ceramic

Part-No.	L	weight in g
VM2-3.30-KE	30	1
VM2-3.40-KE	40	1,3
VM2-3.50-KE	50	1,5
VM2-3.60-KE	60	1,7

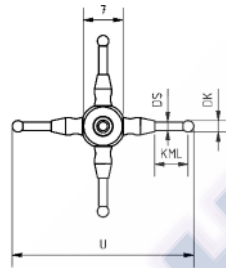
• Special Styli possible, see www.Kingho-china.com

Cube
Material: Steel



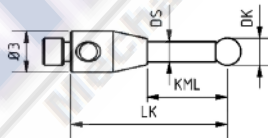
Part-No.	weight in g
WM2-7	1,1

Star Styli
Shaft: Carbide
Sphere: Ruby



Part-No.	DK	U	KML	DS	weight in g
TM2-STAR-DK2.0(4x)-U22	2	22	3,5	1,5	2,3
TM2-STAR-DK2.0(4x)-U32	2	32	6,5	1,5	2,4

Styli M2 for Star Styli

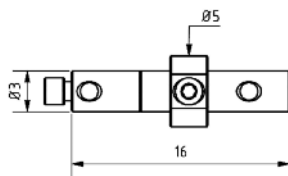


Part-No.	DK	LK	KML	DS	weight in g
TM2-2006.5	2	6,5	3,5	1,5	0,2
TM2-2011.5	2	11,5	6,5	1,5	0,3

• Special Styli possible, see www.Kingho-china.com



Rotary Joint
Material: Steel



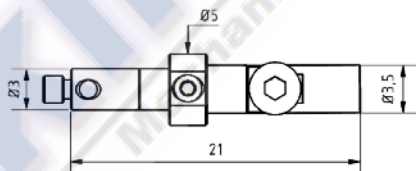
Part-No.	weight in g
DM2-3.16	1,1

Knuckle Joint
Material: Steel



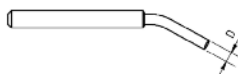
Part-No.	L	weight in g
GM2-3.13	13	1,1
GM2-3.16	16	1,2

Knuckle Rotary Joint
Material: Steel



Part-No.	weight in g
DSM2-3.21	2,1

Tool
Material: Steel



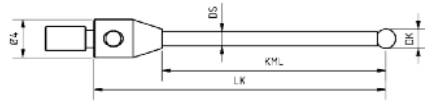
Part-No.	D
SCL-1	1

M2 System

• Special Styli possible, see www.Kingho-china.com

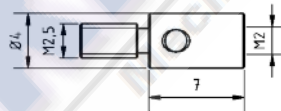


Shaft: Carbide
Sphere: Ruby



Part-No.	DK	LK	KML	DS	weight in g
TM2.5-1515	1,5	15	8	1	0,4
TM2.5-1521	1,5	21	14	1	0,4
TM2.5-2015	2	15	8	1	0,3
TM2.5-2021	2	21	14	1	0,4
TM2.5-2030	2	30	23	1,5	0,9
TM2.5-2521	2,5	21	14	1,5	0,4
TM2.5-2530	2,5	30	23	1,5	1
TM2.5-2540	2,5	40	33	1,5	2
TM2.5-3021	3	21	14	1,5	0,7
TM2.5-3030	3	30	23	1,5	1
TM2.5-3040	3	40	33	1,5	2
TM2.5-4021	4	21	14	2	0,8
TM2.5-4030	4	30	23	2	1,6
TM2.5-4040	4	40	33	2	2

Adapter
Material: Steel



Styli for dial gauges with M2,5 thread

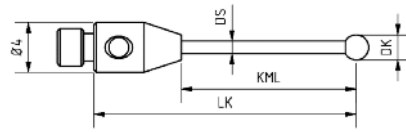
Enclosed you find a choice of M2,5 styli. More dimensions are possible after inquiry.

With the adapter RM2.5-M2 you can put all M2 styli on a M2,5 dial gauge thread. Please see chapter M2.

Part-No.	weight in g
RM2.5-M2	0,3

• Special Styli possible, see www.Kingho-china.com

Shaft: Carbide
Sphere: Ruby

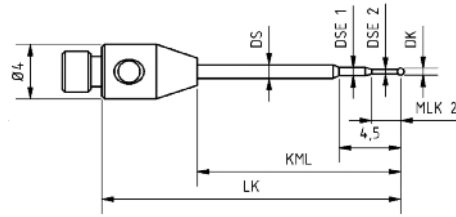


Part-No.	DK	LK	KML	DS	weight in g
TM3-1010	1	10	3	0,7	0,7
TM3-1515	1,5	15	8	0,7	0,7
TM3-1521	1,5	21	14	1	0,8
TM3-1530-DS1	1,5	30	23	1	1
TM3-2015	2	15	8	1	0,7
TM3-2021	2	21	14	1	0,8
TM3-2030	2	30	23	1,5	1,2
TM3-2040	2	40	33	1,5	1,5
TM3-2521	2,5	21	14	1,5	0,8
TM3-2530	2,5	30	23	1,5	1,2
TM3-2540	2,5	40	33	1,5	1,5
TM3-3021	3	21	14	1,5	0,9
TM3-3030	3	30	23	1,5	1,3
TM3-3040	3	40	33	1,5	1,6
TM3-3045	3	45	38	1,5	1,6
TM3-3050	3	50	43	2	2,7
TM3-4021	4	21	14	2	1
TM3-4030	4	30	23	2	1,8
TM3-4040	4	40	33	2	2,3
TM3-4050	4	50	43	2	2,7
TM3-5021	5	21	14	2	1,4
TM3-5030	5	30	23	2	1,8
TM3-5040	5	40	33	2	2,6
TM3-5050	5	50	43	2	2,8
TM3-6021	6	21	14	2	1,5
TM3-6030	6	30	23	2	1,9
TM3-6040	6	40	33	2	2,6
TM3-6050	6	50	43	2	2,9
TM3-8025	8	25	16	3	3,8

• Special Styli possible, see www.Kingho-china.com

Microstyli

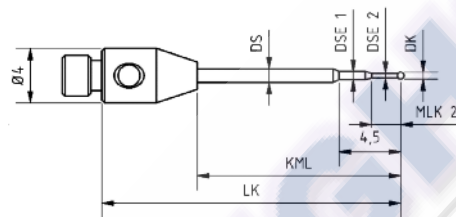
Shaft: Carbide
Sphere: Carbide



Part-No.	DK	LK	KML	DS	DSE 1	MLK2	DSE 2	weight in g
TM3-0222	0,2	22	15	1	0,5	0,9	0,17	0,7
TM3-0322	0,3	22	15	1	0,5	1,1	0,23	0,7
TM3-0522	0,5	22	15	1	0,6	2,3	0,32	0,7

Microstyli

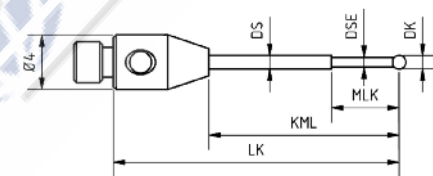
Shaft: Carbide
Sphere: Ruby



Part-No.	DK	LK	KML	DS	DSE 1	MLK2	DSE 2	weight in g
TM3-0522-R	0,5	22	15	1	0,6	2,3	0,32	0,7

Styli Stepped Shaft

Shaft: Carbide
Sphere: Ruby



Part-No.	DK	LK	KML	DS	DSE	MLK	weight in g
TM3-0622	0,6	22	15	1	0,4	4	0,7
TM3-0822	0,8	22	15	1	0,5	4	0,7
TM3-1015	1	15	8	1	0,7	5	0,7
TM3-1021	1	21	14	1	0,7	5	0,7
TM3-1030	1	30	23	1,5	0,7	5	1,2
TM3-1530	1,5	30	23	1,5	1	8	1,2

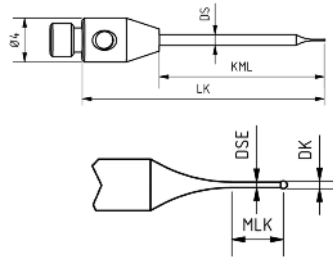
• Special Styli possible, see www.Kingho-china.com



Microstyli

Shaft: Carbide

Sphere: Carbide

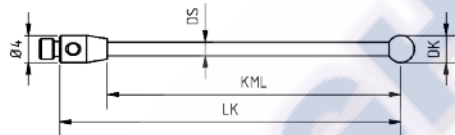


Part-No.	DK	LK	MLK	DSE	weight in g
TM3-00822	0,08	22	1	0,06	0,7
TM3-01022	0,10	22	1	0,07	0,7
TM3-01222	0,12	22	1	0,09	0,7
TM3-01522	0,15	22	1	0,11	0,7

Styli Straight Shaft

Shaft: Ceramic

Sphere: Ruby



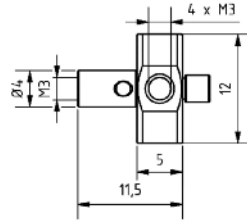
Part-No.	DK	LK	KML	DS	weight in g
TM3-3050-KE	3	50	43	2	1
TM3-4030-KE	4	30	23	2	1
TM3-4050-KE	4	50	43	2	1,2
TM3-5030-KE	5	30	23	2	1,1
TM3-5050-KE	5	50	43	2,5	1,3

• Special Styli possible, see www.Kingho-china.com



Cube

Material: Steel

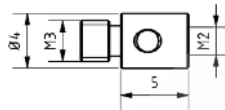


Part-No.	weight in g
----------	-------------

WM3-12	4,2
--------	-----

Adapter

Material: Steel



Part-No.	weight in g
----------	-------------

RM3-M2	0,3
--------	-----

Extensions

Material: Steel

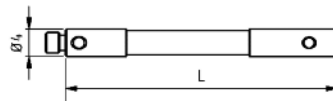


Part-No.	L	weight in g
----------	---	-------------

VM3-4.10	10	0,7
VM3-4.15	15	1,1
VM3-4.20	20	1,4
VM3-4.30	30	2
VM3-4.40	40	2,7
VM3-4.50	50	3,6

Extensions

Material: Steel



Part-No.	L	weight in g
----------	---	-------------

VM3-4.30-KE	30	2
VM3-4.40-KE	40	2,5
VM3-4.50-KE	50	3
VM3-4.60-KE	60	3,5

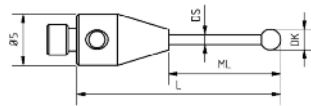
• Special Styli possible, see www.Kingho-china.com



Styli Straight Shaft

Shaft: Carbide

Sphere: Ruby

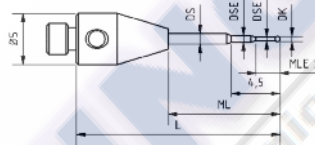


Part-No.	DK	L	ML	DS	weight in g
TM3-1020-DS0.8-XXT	1	20	11	0,8	0,7
TM3-1520-XXT	1,5	20	11	1	0,7
TM3-1530-XXT	1,5	30	21	1	0,9
TM3-1540-XXT	1,5	40	31	1	1,6
TM3-2020-XXT	2	20	11	1	0,7
TM3-2030-XXT	2	30	21	1	0,8
TM3-2040-XXT	2	40	31	1,5	1,7
TM3-2520-XXT	2,5	20	11	1,5	1
TM3-2530-XXT	2,5	30	21	1,5	1,5
TM3-2540-XXT	2,5	40	31	1,5	2

Microstyli

Shaft: Carbide

Sphere: Carbide

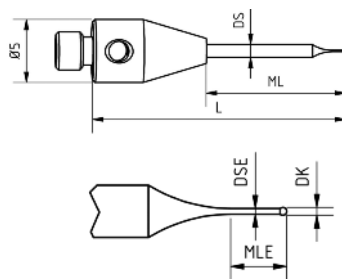


Part-No.	DK	L	ML	DS	DSE 1	MLE 2	DSE 2	weight in g
TM3-0220-XXT	0,2	20	11	1	0,5	1	0,17	0,7
TM3-0320-XXT	0,3	20	11	1	0,5	1,3	0,23	0,7
TM3-0520-XXT	0,5	20	11	1	0,6	2,6	0,32	0,7

Microtaster

Shaft: Carbide

Sphere: Carbide

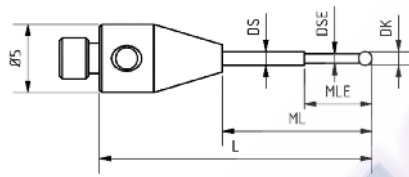


Part-No.	DK	L	MLE	DSE	weight in g
TM3-00820-XXT	0,08	20	1	0,06	0,7
TM3-01020-XXT	0,10	20	1	0,07	0,7
TM3-01220-XXT	0,12	20	1	0,09	0,7
TM3-01520-XXT	0,15	20	1	0,11	0,7

• Special Styli possible, see www.Kingho-china.com



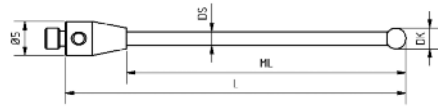
Shaft: Carbide
Sphere: Ruby



Part-No.	DK	L	ML	DS	DSE 1	MLE2	DSE 2	weight in g
TM3-0620-XXT	0,6	20	11	1	0,4	4		0,7
TM3-0820-XXT	0,8	20	11	1	0,5	4,6		0,7
TM3-1020-XXT	1	20	11	1	0,7	5		0,7
TM3-1030-XXT	1	30	21	1	0,7	5		0,8
TM3-1040-XXT	1	40	31	1	0,7	5		1,5

• Special Styli possible, see www.Kingho-china.com

Shaft: Carbon
Sphere: Ruby



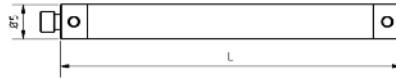
Part-No.	DK	L	ML	DS	weight in g
TM3-3033-OC-XXT	3	33	24	2	0,7
TM3-3040-OC-XXT	3	40	31	2	0,8
TM3-3050-OC-XXT	3	50	41	2	0,8
TM3-3058-OC-XXT	3	58	49	2	1
TM3-3075-OC-XXT	3	75	66	2	1
TM3-4050-OC-XXT	4	50	41	2	1
TM3-5030-OC-XXT	5	30	21	3,5	1,1
TM3-5040-OC-XXT	5	40	31	3,5	1,2
TM3-5050-OC-XXT	5	50	41	3,5	1,4
TM3-5060-OC-XXT	5	60	51	3,5	1,5
TM3-5075-OC-XXT	5	75	66	3,5	1,5
TM3-6050-OC-XXT	6	50	41	3,5	1,5
TM3-6070-OC-XXT	6	70	61	3,5	1,8
TM3-60100-OC-XXT	6	100	91	3,5	2,4
TM3-8050-OC-XXT	8	50	50	5	2,1
TM3-8070-OC-XXT	8	70	70	5	2,6
TM3-80100-OC-XXT	8	100	100	5	2,7

Shaft: Carbon
Sphere: Silicon Nitride



Part-No.	DK	L	ML	DS	weight in g
TM3-SN3040-OC-XXT	3	40	31	2	0,7
TM3-SN3050-OC-XXT	3	50	41	2	0,8
TM3-SN3058-OC-XXT	3	58	49	2	1
TM3-SN3075-OC-XXT	3	75	66	2	1
TM3-SN30100-OC-XXT	3	100	91	2	1,2
TM3-SN4050-OC-XXT	4	50	41	2	1
TM3-SN5050-OC-XXT	5	50	41	3,5	1,4
TM3-SN5075-OC-XXT	5	75	66	3,5	1,5
TM3-SN6050-OC-XXT	6	50	41	3,5	1,5
TM3-SN60100-OC-XXT	6	100	91	3,5	2,4
TM3-SN8050-OC-XXT	8	50	50	5	2,1
TM3-SN80100-OC-XXT	8	100	100	5	2,7

• Special Styli possible, see www.Kingho-china.com

Extensions**Material:** Carbon

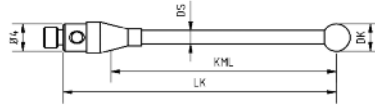
Part-No.	L	weight in g
VM3-5.30-OC-XXT	30	1,3
VM3-5.40-OC-XXT	40	1,4
VM3-5.50-OC-XXT	50	1,5
VM3-5.60-OC-XXT	60	1,7
VM3-5.80-OC-XXT	80	1,8
VM3-5.100-OC-XXT	100	2,0
VM3-5.130-OC-XXT	130	2,5
VM3-5.150-OC-XXT	150	2,7

Adapter Plate VAST XXT**Part-No.**

16050120	piece	XXT TL1 adapter plate with ID-Chip, original ZEISS
16050122	piece	XXT TL3 adapter plate with ID-Chip original ZEISS

• Special Styli possible, see www.Kingho-china.com

Shaft: Carbide
Sphere: Ruby



Part-No.	DK	LK	KML	DS	MLK	DSE	analog	weight in g
TM3-1021-HDH	1	21	14	1	5	0,7	T421	0,7
TM3-2021-HDH	2	21	14	1			T422	0,9
TM3-3021-HDH	3	21	14	1,5			T423	1
TM3-4021-HDH	4	21	14	2			T424	1
TM3-4040-HDH	4	40	33	2			T404	2,6
TM3-5040-HDH	5	40	33	2			T405	2,6
TM3-6040-HDH	6	40	33	2			T406	2,6
TM3-8040-HDH	8	40	31	3			T408	2,7

From DS 2,0mm with breaking point

• Special Styli possible, see www.Kingho-china.com

Tool

Material: Steel



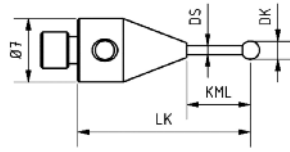
Part-No.	L	
SCL-1.5	1,5	M3 System



Styli Straight Shaft

Shaft: Carbide

Sphere: Ruby

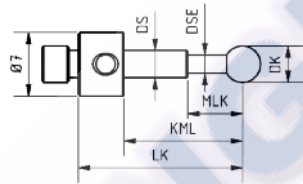


Part-No.	DK	LK	KML	DS	weight in g
TM4-2019	2	19	7	1	2,6
TM4-8016	8	16	4	3	3,6

Styli Stepped Shaft

Shaft: Carbide

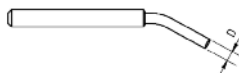
Sphere: Ruby



Part-No.	DK	LK	KML	DS	DSE	MLK	weight in g
TM4-1019.5	1	19,5	7,5	1	0,7	5	2,6
TM4-3018.5	3	18,5	13,5	2,5	1,5	6,5	2,1
TM4-4018	4	18	13	3	2	6	2,5
TM4-5017.5	5	17,5	13,5	3,7	2	6,5	2,5
TM4-5020	5	20	15	3,7	2	8	2,7
TM4-5030	5	30	25	3,7	2	18	3,2
TM4-6017	6	17	12	4	2	5	2,6

Tool

Material: Steel

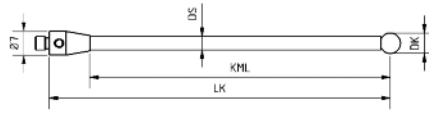


Part-No.	D	weight in g
SCL-2	2	M4 System

• Special Styli possible, see www.Kingho-china.com

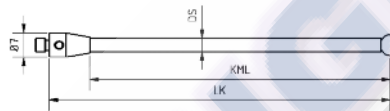


Shaft: Ceramic
Sphere: Ruby



Part-No.	DK	LK	KML	DS	weight in g
TM4-5050-KE	5	50	38	4	4
TM4-50100-KE	5	100	88	4	5,9
TM4-6050-KE	6	50	38	4	4,1
TM4-60100-KE	6	100	88	4	6
TM4-8050-KE	8	50	38	4	4,8
TM4-80100-KE	8	100	88	4	6,3

Shaft: Carbon
Sphere: Ruby



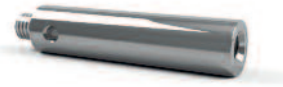
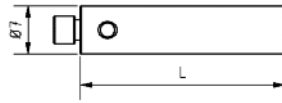
Part-No.	DK	LK	KML	DS	weight in g
TM4-60100-OC	6	100	88	4	6
TM4-60150-OC	6	150	138	4	4,8
TM4-60200-OC	6	200	188	4	6,3

• Special Styli possible, see www.Kingho-china.com



Extensions

Material: Steel



Part-No.	L	weight in g
VM4-7.10	10	2,4
VM4-7.15	15	3,7
VM4-7.20	20	4,8
VM4-7.30	30	7,4

Extensions

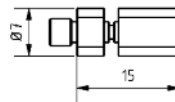
Material: Steel



Part-No.	L	weight in g
VM4-7.30-KE	30	5,1
VM4-7.50-KE	50	6,7
VM4-7.100-KE	100	10,6

Breaking Piece

Material: Steel



Part-No.	weight in g
SOLLBR-M4-15-M4	3,4

• Special Styli possible, see www.Kingho-china.com



Tool

Material: Steel



Part-No.	D	
SCL-1	1	M2 System
SCL-1.5	1,5	M3 System
SCL-2	2	M4 System
SCL-3	3	M5 System

Cleaning cloth lint-free



Part-No.	
CLEAN-PAPER-200	200 pcs

Tweezer



KINGHO
Mechanical & Electrical



Part-No.
16061308



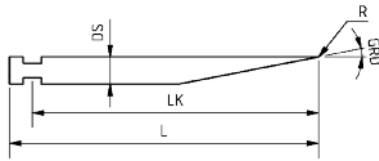
Form I Contour

We produce your form- and contour styli according to your sketch or our own construction. With our long experience you get especially smallest and unusual styliforms within the shortest possible time. You also get standard styli of well-known machine manufacturers.

Reparations like change or regrinding defect contour styli can be done within 1-2 days - including test certificate.

Example similar:
Mahr, Mitutoyo, Zeiss

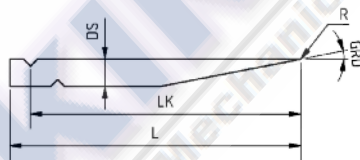
Material: Carbide



Part-No.	L	LK	DS	R	GRD
100.400	59	56,5	3,5	0,025	12°
100.401	33	30,5	3,5	0,025	12°
100.402	20,5	18	3,5	0,025	12°
100.600	60	56	3	0,025	11°
100.601	34	30	3	0,025	11°
100.602	21	17	2	0,025	11°
100.800	50	46	3	0,025	11°
100.801	38	34	3	0,025	11°
100.802	28	24	3	0,025	11°
100.803	20	16	3	0,025	11°

Example similar:
Hommel-Etamic

Material: Carbide



Part-No.	L	LK	DS	R	GRD
100.500	52	50,1	3	0,02	11°
100.508	42	40,1	3	0,02	11°
100.501	32	30,1	3	0,02	11°
100.502	21	18,9	3	0,02	11°

Other dimensions:

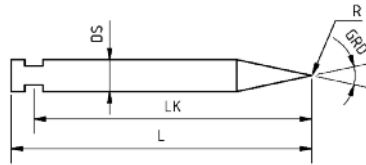
Please ask with part number or drawing. Different radius and angeles are possible.

- Special Styli possible, see www.Kingho-china.com



Example similar:
Mahr

Material: Carbide



Part-No.	L	LK	DS	R	GRD
100.406	59	56,5	3,5	0,025	24°
100.407	33	30,5	3,5	0,025	24°
100.408	20,5	18	3,5	0,025	24°

Other dimensions:

Please ask with part number or drawing. Different radius and angeles are possible.

- Special Styli possible, see www.Kingho-china.com



Surface | Roughness

We produce your roughness styli according to your own construction. High polished diamond tips with different dimensions are on stock, so we can guarantee shortest delivery times. Our service is also replacement of defect diamond tips and reparation of your surface styli.

For documentation you receive a test report to every diamond tip.



Metrology I

Manufacturing machines

Depending on mechanical stress and external factors we are choosing our components. So you get an optimal use on your machines.



KINGHO
Mechanical & Electrical



ICT I Industrial computer tomography

We produce the desired calibration unit with the latest carbon fiber technology.

A certificate with all important data you get on demand.